



Heath Place, London, E3

BUTLER & STAG



Chic 2 Bedroom, 2 Bath Apartment with Stunning Canary Wharf Views

Welcome to your urban oasis nestled in the heart of the vibrant Mile End district. This stylish 2-bedroom, 2-bathroom apartment offers not just a place to call home, but an experience of modern luxury and convenience. Situated in a prime location on the east side of the building and therefore a top floor position with an open aspect south-facing balcony boasting breathtaking views of Canary Wharf.



Leasehold

- Two Double Bedrooms
- Two Bathrooms With En-Suite Master
- South Facing Balcony
- Canary Wharf Views
- Minutes From Mile End Station
- Short Walk To Mile End & Victoria Parks
- Communal Roof Terrace With Views Of The Entire City
- EWS1 Complaint

Conveniently located just a short stroll away from Mile End station, commuting to any corner of London is a breeze. Whether you're headed to work in Canary Wharf, exploring the West End, or catching a flight from London City Airport, you're seamlessly connected to the city's pulse. Step out onto your private balcony and immerse yourself in the panoramic vistas of the iconic Canary Wharf skyline. From sunrise to sunset, the ever-changing cityscape provides a stunning backdrop to your daily life.

Step inside to discover a thoughtfully designed interior flooded with natural light. The open-plan layout seamlessly connects the living, dining, and kitchen areas, creating a spacious and inviting atmosphere for entertaining or relaxation.

The sleek and contemporary kitchen is a chef's delight, featuring smeg appliances, ample storage space, and stylish countertops. Whether you're whipping up a quick breakfast or preparing a gourmet feast, cooking here is a pleasure.

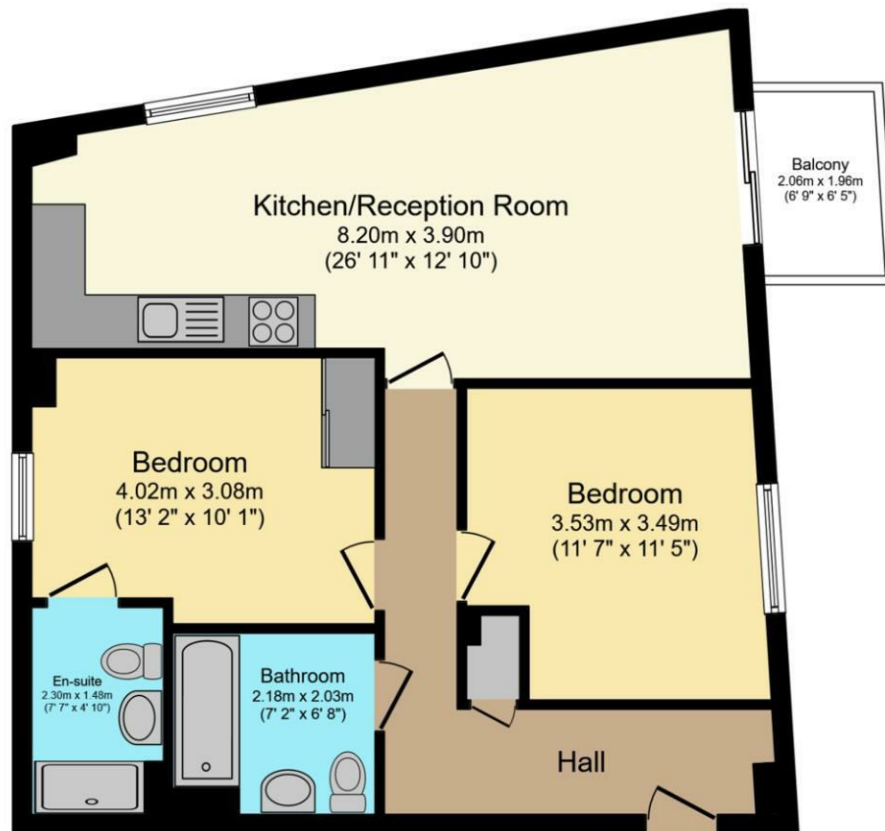
Retreat to your sanctuary in one of the double bedrooms with en-suite master. Each bedroom offers plush carpeting, ample closet space, and large windows overlooking the vibrant neighborhood below, providing the perfect setting for rest and rejuvenation.

With a plethora of shops, restaurants, cafes, and recreational facilities right at your doorstep, everything you need is within easy reach. Explore the vibrant neighborhood, take a leisurely stroll through the nearby parks, or enjoy a picnic along the picturesque canals.

Don't miss this rare opportunity to experience luxury living in one of London's most sought-after locations. Contact us today to schedule a viewing and make this stunning apartment your new home!







Third Floor Plan

Total floor area 66.0 sq. m. (710 sq. ft.) approx

IMPORTANT NOTICE - These particulars have been prepared in good faith and they are not intended to constitute part of an offer or contract. We have not performed a structural survey on this property and the services, appliances and specific fittings have not been tested. All photographs, measurements, floor plans and distances referred to are given as a guide and should not be relied upon.

BUTLER & STAG

☎ 020 8102 1236

🏠 508 Roman Road, Bow, London, E3 5LU

✉ bow@butlerandstag.com

www.butlerandstag.uk